

ETMA Furniture

Cabin - Collab Furniture - Pods



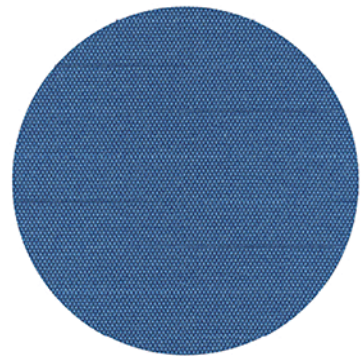




P68

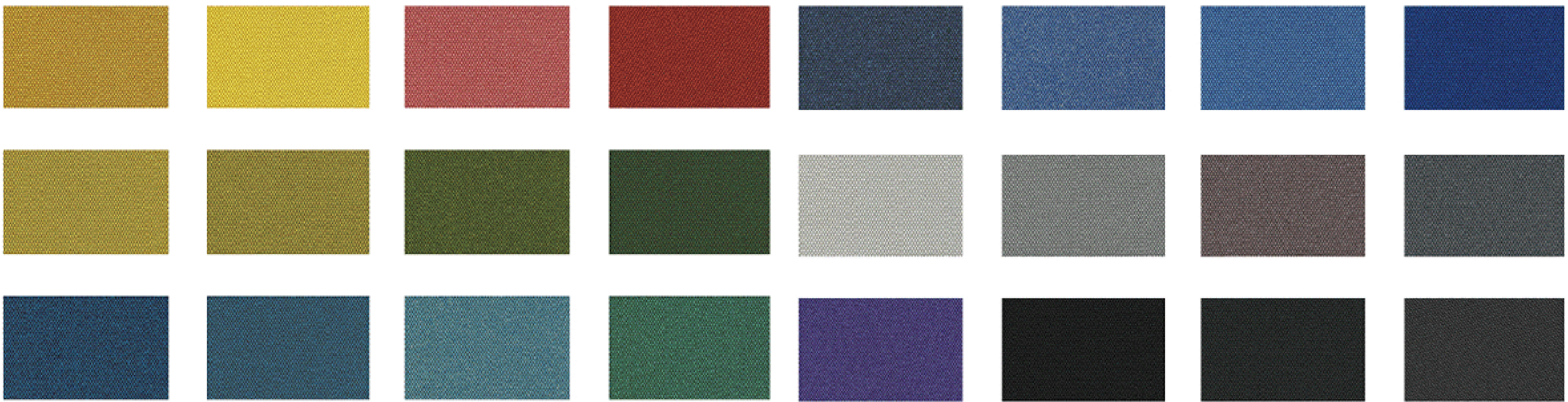
Backrest: Made of PP new material, formed by one-time injection molding.
Seat Foam: High-quality, high-rebound, dense foamed sponge.
Base Shell: Made of PP new material, formed by one-time injection molding.
Chassis: Original position lift chassis.
Gas Cylinder: Three-stage safety anti-explosion gas cylinder, lifting range 100mm.
Leg Frame: Made of aluminum alloy die-casting.





seat fabric color

Diverse color choices not only enhance the visual aesthetics, but also make the space more personalized, showing a unique taste and style.





KC-500#
650x450x690-750mm



KC-501#
650x450x750mm



KC-520#
1200x450x750mm



KC-502#
650x450x690-750mm



KC-504#
600x450x690-750mm



KC-515#
650x450x690-780mm



KC-523#
1200x450x690-750mm



KC-512#



KC-511#



KC-517#
600x400x690-750mm



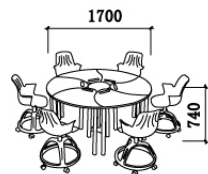
KC-518#
600x400x750mm



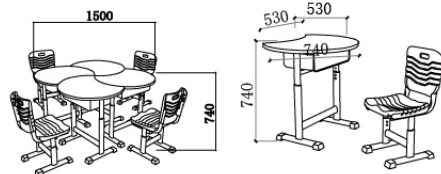
KC-519#
510x450x750mm



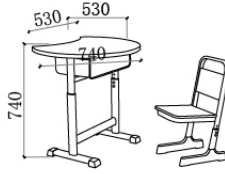
KC-570#



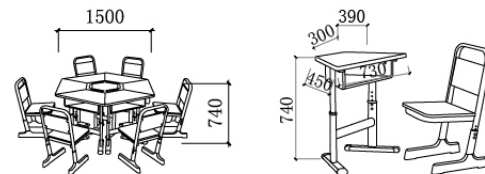
KC-574A#



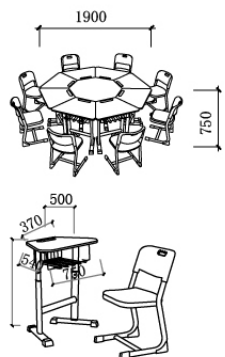
KC-574#



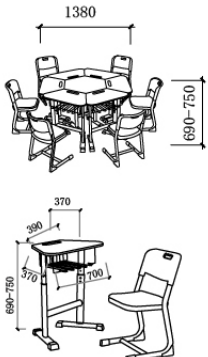
KC-575#



KC-576#

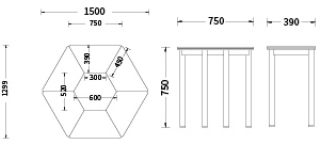


KC-577#

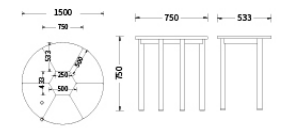




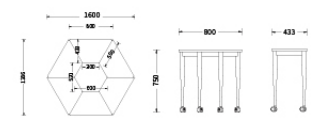
KC-578#



KC-579#



KC-580#



Y-61#



Y-62#



Y-63#



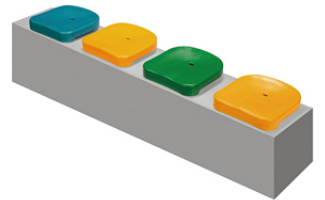
Y-65#



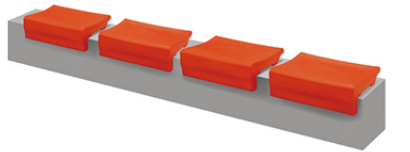
Y-66#



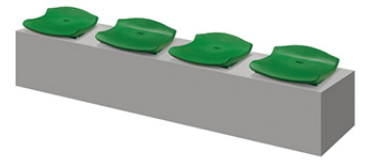
Y-67#



Y-68#



Y-69#



Y-71#



Y-72#



Y-73#



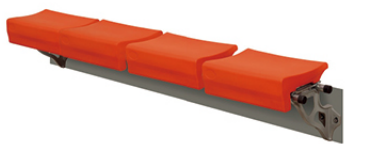
Y-75#



Y-76#



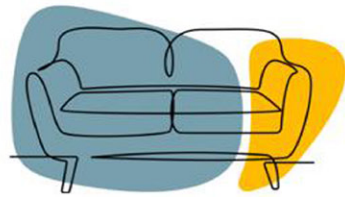
Y-77#



Y-78#



Y-79#



ETMA Furniture

Cabin - Collab Furniture - Pods

8778210495 / 044 - 22351319

| sales@etmafurniture.com