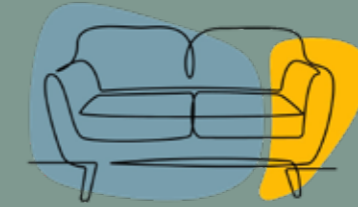




KK Complex, Velachery Rd, Chennai, Tamil Nadu 600015



ETMA Furniture
Cabin - Collab Furniture - Pods



SCHOOL DESK AND CHAIR

CATALOG

01

YUECHENG

001-026

02

HEYUE

027-054

03

LANGYUE

055-082

04

JUNYUE

083-110



ETMA Furniture
Cabin - Collab Furniture - Pods

NEW DESIGN

DESIGN
SPECIFICATION





DESIGN CONCEPT

Designed to support students' physical and mental development with "comfort, health and learning efficiency" at the core. The ergonomic structure of the desks and chairs helps students maintain a good sitting posture and reduces the fatigue caused by long hours of study. The materials used are environmentally friendly and durable, safe, non-toxic and in line with the concept of sustainable development of modern campuses. The overall design is simple and practical, incorporating modern aesthetics, which is both aesthetically pleasing and functional, creating a comfortable and focused learning environment to help students devote themselves to their studies and improve their learning efficiency.



YUECHENG

Minimalist design to
brighten up the learning
space

The overall design is simple and practical,
incorporating modern aesthetics that are both
aesthetically pleasing and functional, creating a
comfortable and focused learning environment.





The simple and generous design with ergonomic support makes the learning process more comfortable and efficient.



Product details



Scientific stress
Thicker brackets are more stable



Two bookends to choose from



Side book bag hook
Convenient for book bag hanging



Product Parameters



KY-0318

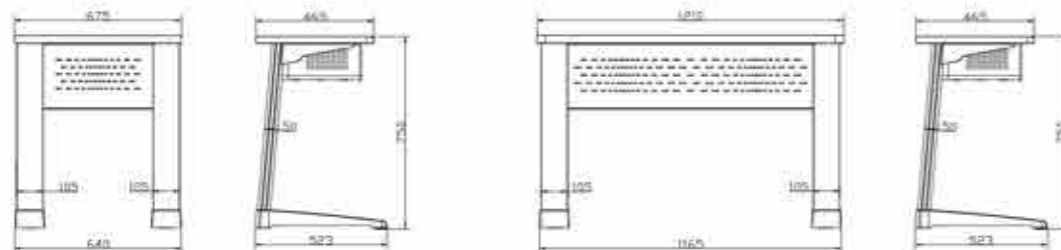


KY-0316

Specifications: 675*465*750mm 1210*465*750mm
 Desktop: The base material is made of environmentally friendly E1 multilayer board, with melamine veneer on the surface. The cross-section of the desktop is made of PP plastic and is molded by a large injection molding machine. It has a pen slot and a cup mouth, and the seat is a duckbill edge.
 Standing feet: High-quality special-shaped pipes, the surface is treated with rust, anti-fouling, phosphating, and electrostatic spraying.
 Baseboard: It is made of aluminum alloy one-piece die-casting, and the surface is treated with anti-oxidation and high-temperature spraying. It has strong adhesion, impact resistance, corrosion resistance, no rust, no fading, and durability. With adjustable pad rubber.
 Unique streamlined design, unique and novel shape.

Product Information

Product Dimension



YUECHENG

The Way of Learning
begins with desks and
chairs

The overall design is simple and practical, incorporating modern aesthetics that are both aesthetically pleasing and functional, creating a comfortable and focused learning environment.





Ergonomic design
Scientific Sitting is not tiring

The chair is proportioned to fit the waist, back and hips,
Correct sitting posture is not hunched, sitting for a long time is not tired





Product Parameters



KY-0318-1



KY-0316-1

Product Information

Specifications: 675*465*750mm 1210*465*750mm

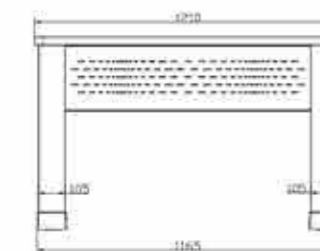
Desktop: The base material is made of environmentally friendly E1 multi-layer board, with melamine veneer on the surface. The cross-section of the desktop is made of PP plastic and is molded by a large injection molding machine. It has an L-shaped pen slot and a duckbill edge for the seat.

Standing feet: High-quality special-shaped pipes, with anti-rust, anti-fouling, phosphating and electrostatic spraying treatment on the surface.

Baseboard: It is made of aluminum alloy one-piece die-casting, and the surface is treated with anti-oxidation and high-temperature spraying. It has strong adhesion, impact resistance, corrosion resistance, no rust, no fading, and is durable. With adjustable pad rubber.

Unique streamlined design, unique and novel shape.

Product Dimension



YUECHENG

Modern Aesthetics, New
Style on Campus

The overall design is simple and practical,
incorporating modern aesthetics that are both
aesthetically pleasing and functional, creating a
comfortable and focused learning environment.



IN THIS WORLD
WE ARE THE ONE



The combination of durable materials and exquisite craftsmanship satisfies the pursuit of quality and adds a fashionable flavor to campus life.



A choice for taste and quality that fuels every moment of knowledge building.



Product Parameters



KY-0318-2

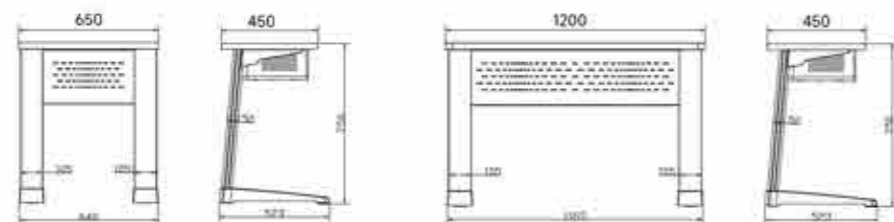


KY-0316-2

Product Information

Specifications: 650*450*750mm 1200*450*750mm
 Desktop: 25mm high-density particle board with double-sided fireproof board, and PVC edge sealing around.
 Station pipe: high-quality special-shaped pipe, the surface is treated with rust prevention, anti-fouling, phosphating, and electrostatic spraying.
 Baseboard: Aluminum alloy one-piece die-casting, the surface is treated with anti-oxidation and high-temperature spraying, strong adhesion, impact resistance, corrosion resistance, no rust, no fading, and durable. With adjustable pad rubber.
 Unique streamlined design, unique and novel shape.

Product Dimension



YUECHENG



Taste design, exquisite learning experience

The overall design is simple and practical, incorporating modern aesthetics that are both aesthetically pleasing and functional, creating a comfortable and focused learning environment.



FASHION DESIGN



The combination of durable materials and exquisite craftsmanship satisfies the pursuit of quality and adds a fashionable flavor to campus life.



Product Parameters



KY-0318-3

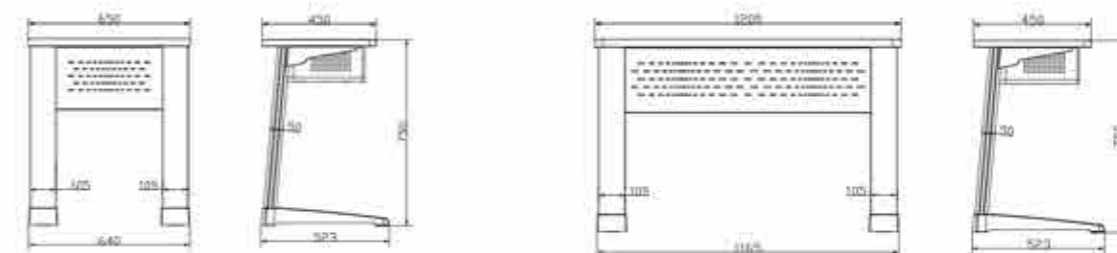


KY-0316-3

Product Information

Specifications: 650*450*750mm Specifications: 1200*450*750mm
Desktop: 25mm high-density particleboard with double-sided fireproof board, the desktop is made of PP plastic with one-time injection molding by a large injection molding machine, with pen slot.
Station pipe: high-quality special-shaped pipe, the surface is treated with rust, anti-fouling, phosphating, and electrostatic spraying.
Base: Aluminum alloy one-piece die-casting, the surface is treated with anti-oxidation and high-temperature spraying, strong adhesion, impact resistance, corrosion resistance, no rust, no fading, and durable. With adjustable pad rubber.
Unique streamlined design, unique and novel shape.
Baseboard: with adjustable pad rubber.

Product Dimension





ETMA Furniture
Cabin - Collab Furniture - Pods

Focusing on every detail.
Just to accomplish a more efficient learning time.



color matching



KY-0318



KY-0318-1



KY-0318-2



KY-0318-3



KY-0316



KY-0316-1

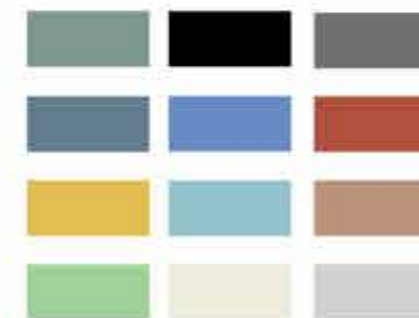


KY-0316-2



KY-0316-3

desktop color



color matching

